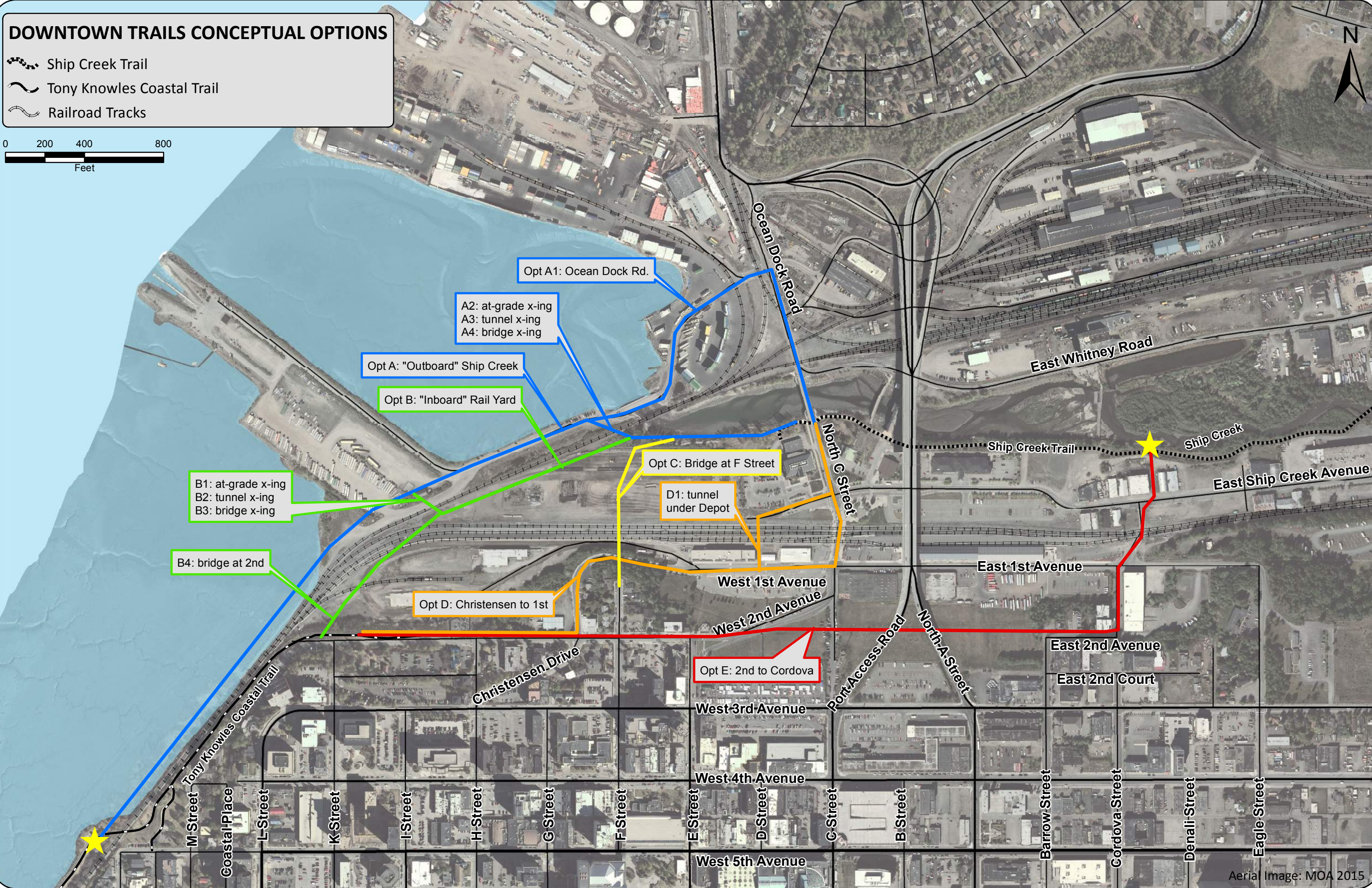
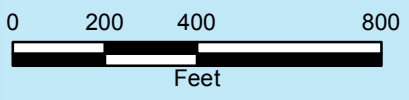


DOWNTOWN TRAILS CONCEPTUAL OPTIONS

- Ship Creek Trail
- Tony Knowles Coastal Trail
- Railroad Tracks



Opt A1: Ocean Dock Rd.

A2: at-grade x-ing
A3: tunnel x-ing
A4: bridge x-ing

Opt A: "Outboard" Ship Creek

Opt B: "Inboard" Rail Yard

Opt C: Bridge at F Street

D1: tunnel under Depot

B1: at-grade x-ing
B2: tunnel x-ing
B3: bridge x-ing

B4: bridge at 2nd

Opt D: Christensen to 1st

Opt E: 2nd to Cordova

M Street
Coastal Place
L Street
K Street
I Street
H Street
G Street
F Street
E Street
D Street
C Street
B Street
Barrow Street
Cordova Street
Denali Street
Eagle Street

West 1st Avenue
West 2nd Avenue
West 3rd Avenue
West 4th Avenue
West 5th Avenue

Ocean Dock Road
North C Street
North A Street
Port Access Road

East Whitney Road
Ship Creek Trail
Ship Creek
East Ship Creek Avenue
East 1st Avenue
East 2nd Avenue
East 2nd Court